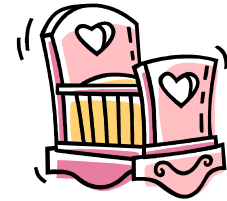


Updates on ASTM F1169 for Full-Size Baby Crib

ASTM F1169-07, the standard specification for **Full-Size Baby Crib**, was published in October, 2007 to revise the last previous edition **ASTM F1169-03**.

Full-Size Crib is defined as a bed that is designed to provide sleeping accommodations for an infant having interior dimensions of $28 \pm 5/8$ in. (710 ± 16 mm) wide and $52 \frac{3}{8} \pm 5/8$ in. (1330 ± 16 mm) long.

Compared with the last previous edition, **ASTM F1169-07** has rewritten the sections on "**Labeling**" and "**Instructional Literature**". Details of the requirements are highlighted in the following table.



Clause	Changes
§ 8 Labeling	<p>General requirements for warning statements (§ 8.1)</p> <ul style="list-style-type: none"> ▪ Easy to read and understand. ▪ In contrasting color(s) and permanent. ▪ Text shall be in sans serif type. ▪ The safety alert symbol and the word "WARNING" shall not be less than 0.2 in. (5 mm) high and the remainder of the text shall be in characters whose upper case shall be at least 0.1 in. (2.4 mm) high. <p>Required warning statement (§ 8.2):</p> <p>⚠ WARNING: Infants can suffocate on soft bedding. Never add a pillow, comforter or padding.</p> <p><i>N.B.: It must be visible in its entirety with the crib assembled according to the manufacturer's instructions and the recommended maximum thickness mattress in place.</i></p> <p>Additional warning statements (§ 8.3 & § 8.4):</p> <p><i>The product must have a visible warning giving the location of the warning statements as follows:</i></p> <p>WARNING See (insert statement indicating to the user where to find the warning) for warnings.</p> <p>⚠ WARNING: Failure to follow these warnings and the assembly instructions could result in serious injury or death.</p> <p><i>The following hazards, including those where identified, shall be addressed in the warnings.</i></p> <ul style="list-style-type: none"> ▪ Strangulation Hazard: <ul style="list-style-type: none"> * Strings can cause strangulation! Do not place items with a string around a child's neck, such as hood strings or pacifier cords. Do not suspend strings over a crib or attach strings to toys. * To help prevent strangulation tighten all fasteners. A child can trap parts of the body or clothing on loose fasteners. * DO NOT place crib near window where cords from blinds or drapes may strangle a child. ▪ Fall Hazard: <ul style="list-style-type: none"> * When child is able to pull to a standing position, set mattress to lowest position and remove bumper pads, large toys and other objects that could serve as steps for climbing out. * After raising side, make sure latches are secure (omit for stationary side cribs). * DO NOT leave child in crib with side lowered. Be sure side is in raised and locked position whenever child is in crib (omit for stationary side cribs). * When child is able to climb out or reaches the height of 35 in. (90 cm), the crib shall no longer be used.

Updates on ASTM F1169 for Full-Size Baby Crib

Clause (Cont'd)	Changes (Cont'd)
§ 8 Labeling (cont'd)	<p>Additional warning statements (§ 8.3 & § 8.4) (cont'd):</p> <ul style="list-style-type: none"> ▪ Risk of SIDS: <ul style="list-style-type: none"> * To reduce the risk of SIDS, pediatricians recommend healthy infants be placed on their backs to sleep, unless otherwise advised by your physician. ▪ Other General Hazards: <ul style="list-style-type: none"> * Check this product for damaged hardware, loose joints, missing parts or sharp edges before and after assembly and frequently during use. DO NOT use crib if any parts are missing, damaged or broken. Contact (insert manufacturer's name) for replacement parts and instructional literature if needed. DO NOT substitute parts. <p><i>Additional warning statements must be permanently affixed to either the headboard, footboard, or mattress support and visible in their entirety when the crib mattress is removed. The warning must address the following:</i></p> <ul style="list-style-type: none"> ▪ For Cribs not intended to hold water mattresses, it must include the statement of "DO NOT use a water mattress with this crib". ▪ For products designed to use a water mattress, the maximum thickness and weight of the water mattress must be specified. ▪ Cribs equipped with teething rails must include the statement of "Replace teething rail if damaged, cracked or loose". ▪ If refinishing, use a non-toxic finish specified for children's products.
§ 9 Instructional Literature	<p>General requirements (§ 9.1)</p> <ul style="list-style-type: none"> ▪ Be provided with the crib, easy to read and understand. ▪ Include information on assembly, maintenance, cleaning, storage and use. ▪ A means shall be provided to keep instructions with the crib. <p>Required warnings for Instructions (§ 9.2)</p> <p><i>Besides the warnings as per Section 8 Labeling, instruction shall also have warnings addressing:</i></p> <ul style="list-style-type: none"> ▪ Read all instructions before assembling crib. Keep instructions for future use. ▪ Never use plastic shipping bags or other plastic film as mattress covers because they can cause suffocation. ▪ Infants can suffocate in gaps between crib sides and a mattress that is too small.

As your key business partner, STR-HK offers Testing on Toys and Children's Products to ensure your products are safe for marketing worldwide!

Specialized Technology Resources (H.K.) Ltd. has obtained HOKLAS accreditation on various toy safety standards. For details of our HOKLAS scope of accreditation, please visit: <http://www.itc.gov.hk/en/quality/hkas/doc/hoklas/036.pdf>

For enquires or other information on toys and reliability testing, please contact STR at:

Email: Toys.enquiry@strhk.com / Telephone: 852-29434676

or visit our website at <http://www.strhk.com> or <http://www.strcn.com>